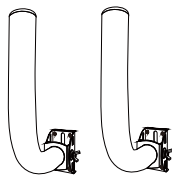


User Manual

Universal Wireless Bridge Bracket Mount,
Non-Slip, J Pole Mount Accessory
Pole and Wall-Mounted Mount



Bracket Mount

Soshine
An Excellent Power Supplier

Accessories list:



Hoops x4



① Washer x4

! Very important accessories assembled in order



② Spring washer x4



③ Butterfly screw x4



Expansion screw x8

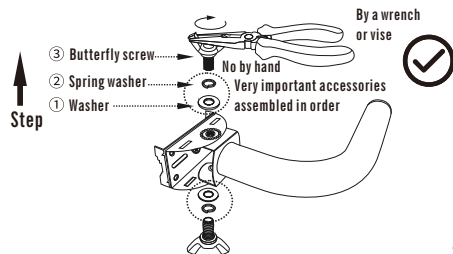


Screw x8

Assembly bracket:

1. Put the washer on the bracket connection surface.
2. Put the spring washer on the top of the washer.
3. Put the crook screw through the washer.
4. Use a wrench or vise to fix the crook screw on the bracket.

Required accessories: x2 x2 x2

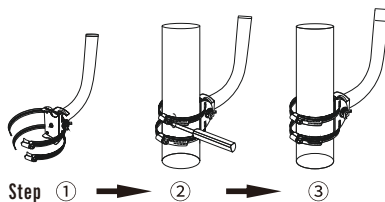


1

J pole mounting:

1. Putting a hoop through the back plate.
2. Use the hoop to tie up the pole and the bracket, adjust the direction of the bracket and then tighten the hoop (connect the head and tail of the hoop, and then use a screwdriver to adjust the size of the hoop).
3. Installation completed.

Required accessories: x2 x2 x2 x2



Step ① → ② → ③

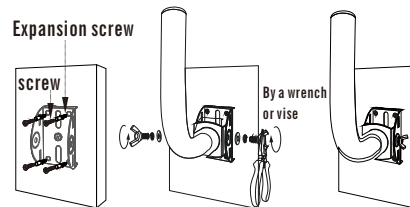
Wall mounting: expansion screw are required

1. Select the wall, mark the position and drill 4 holes with a diameter of 6mm at the corresponding marks.
2. Install the backplate to the drilled wall with four expansion screws, and align the four screws to each of the four holes and fix them.
3. Finally, assemble the bracket.
4. Installation completed.

Required accessories: x2 x2 x2 x4 x4

2

Expansion screw

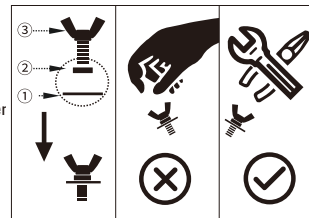


Step ① → ② → ③

Attention:



Very important accessories assembled in order



Small metal washer on top of large washer

No by hand

By a wrench or vise



www.soshine.com.cn

3