



UN 38.3 检测报告

UN38.3 Test Report

产品名称: 锂离子充电电池
Product Name: Li-ion rechargeable battery

委托单位: 深圳市元明电源有限公司
Consignor: Shenzhen soshine battery co., ltd

委托单位地址: 深圳市龙华观澜五和大道310号金科工业园A栋703
Address: 703#, Building A, JinKe Industrial Park, 310# Wuhe avenue, Guanlan Town, Longhua District, Shenzhen 518110, P.R.China

产品型号: 26650
Product Type:

检测日期: 2019-04-08 - 2019-04-23
Tested Date:

发布日期: 2019-05-06
Issued Date:

深圳市倍测检测有限公司
Shenzhen BCTC Testing Co., Ltd.

地址: 深圳市宝安区福永街道桥头社区福园一路鹏洲工业园
B栋东面1楼2楼及倍测大厦

BCTC Building & 1-2F, East of B Building, Pengzhou Industrial, Fuyuan 1st Road,
Qiaotou Community, Fuyong Street, Bao'an District, Shenzhen, China

电话/Tel.:400-788-9558; 传真/Fax.:0755-33229357

网址/Web.: www.bctc-lab.com.cn

邮件/Email: bctc@bctc-lab.com.cn



产品名称: Product Name:	锂离子充电电池 Li-ion rechargeable battery		
生产单位: Manufacturer:	深圳市元明电源有限公司 Shenzhen soshine battery co., ltd		
生产地址: Address:	深圳市龙华观澜五和大道310号金科工业园A栋703 703#, Building A, JinKe Industrial Park, 310# Wuhe avenue, Guanlan Town, Longhua District, Shenzhen 518110, P.R.China		
样品编号: Sample No.:	B01~ B18, C01~ C30.		
商标: Trade Mark:		接收日期 Receiving Date:	2019-04-08
额定规格: Rating:	3.7V, 5500mAh, 20.35Wh	检验环境: Testing Condition:	20-25°C, 45-75%R.H
样品外观 / Appearance: 形状 / Shape: 近圆柱体 / Almost Cylindrical; 尺寸 / Size: (D*H): D : 26.1mm H: 68.0mm			
测试方法和判定标准/ Test method and criterion: Recommendations on the Transport of Dangerous Goods, Manual of Test and Criteria (ST/SG/AC.10/11/Rev.6, 38.3/Amendment 1) 联合国《关于危险货物运输的建议书》第六修订版修正1, 38.3标准要求 (ST/SG/AC.10/11/Rev.6, 38.3/Amendment 1)			
检验项目/ Test Item: T.1.: Altitude simulation 高度模拟, T.2.: Thermal test 温度试验, T.3.: Vibration 振动, T.4.: Shock 冲击, T.5.: External short circuit 外部短路, T.6.: Impact 撞击, T.7.: Overcharge 过充电, T.8.: Forced discharge 强制放电			
检验结论 / Conclusion: 经测试, 该样品符合联合国《关于危险货物运输的建议书 实验和标准手册》第六修订版修正1, 第38.3节标准要求。 The sample has passed the test items of UNITED NATIONS "Recommendations on the TRANSPORT OF DANGEROUS GOODS" Manual of Tests and Criteria ST/SG/AC.10/11/Rev.6, 38.3/Amendment 1 本报告为修改报告, 原报告号为BCTC-LH190400031B, 只对原型号26650P改为了26650, 其他无任何变动, 自本报告发行日期开始, 原报告作废。 <div style="text-align: right;">  (检测单位盖章/Sealed) </div>			
检 测:		审 核:	
Tested by:		Reviewed by:	
		批 准:	
		Approved by:	



一般说明 / General remark:

本报告出现的试验结果仅与试验样品有关。

The test results presented in this report relate only to the object tested.

除非全部复制，否则无试验室书面批准本报告不得部分复制。

This report shall not be reproduced, except in full, without the written approval of the Issuing testing laboratory.

可能的试验情况判定 / Possible test case verdicts:

— 试验情况不适用本试验产品

— Test case does not apply to the test object

N/A (or N)

— 试验样品满足要求

— Test object does meet the requirement

P (Pass)

— 试验样品不满足要求

— Test object does not meet the requirement

F (Fail)



条款/Clause	标准要求/ Requirement + Test	结果 / Result	判定/ Verdict
38.3.4.1	Test T.1: Altitude simulation/高度模拟		P
	Test cells and batteries shall be stored at a pressure of 11.6 kPa or less for at least six hours at ambient temperature (20±5°C)/将电芯和电池在温度为20±5°C、大气压力不大于11.6kpa的环境中贮存不少于6个小时。		P
	Cells and batteries meet this requirement if there is no mass loss, no leakage, no venting, no disassembly, no rupture and no fire and if the open circuit voltage of each test cell or battery after testing is not less than 90% of its voltage immediately prior to this procedure. The requirement relating to voltage is not applicable to test cells and batteries at fully discharged states. /电芯和电池符合要求：无质量损失、无漏液、无冒烟、无分解、无破裂以及无着火现象；电芯或电池测试后的开路电压不低于测试前开路电压的90%。此项关于电压方面的要求不适用于完全放电后的电芯和电池。	No leakage, no venting, no disassembly, no rupture and no fire. / 无漏液、无冒烟、无分解、无破裂以及无着火现象。 The data see table T.1. / 测试数据见表T.1。	P
38.3.4.2	Test T.2: Thermal test/温度试验		P
	Test cells and batteries are to be stored for at least six hours at a test temperature equal to 72±2°C, followed by storage for at least six hours at a test temperature equal to -40±2°C. The maximum time interval between test temperature extremes is 30 minutes. This procedure is to be repeated 10 times, after which all test cells and batteries are to be stored for 24 hours at ambient temperature (20±5°C). /首先将样品放在72±2°C的环境中放置至少6个小时，然后放在-40±2°C的环境中放置至少6个小时。温度转换的最大间隔时间为30分钟。如此循环10次，最后将样品放在20±5°C的环境中静置24小时。		P
	For large cells and batteries the duration of exposure to the test temperature extremes should be at least 12 hours. /对于大电芯，在高温和低温中放置的时间最少12个小时。		N/A



条款/Clause	标准要求/ Requirement + Test	结果 / Result	判定/ Verdict
	<p>Cells and batteries meet this requirement if there is no mass loss, no leakage, no venting, no disassembly, no rupture and no fire and if the open circuit voltage of each test cell or battery after testing is not less than 90% of its voltage immediately prior to this procedure. The requirement relating to voltage is not applicable to test cells and batteries at fully discharged states.</p> <p>/电芯和电池符合要求：无质量损失、无漏液、无冒烟、无分解、无破裂以及无着火现象；电芯或电池测试后的开路电压不低于测试前开路电压的90%。此项关于电压方面的要求不适用于完全放电后的电芯和电池。</p>	<p>No leakage, no venting, no disassembly, no rupture and no fire. / 无漏液、无冒烟、无分解、无破裂以及无着火现象。</p> <p>The data see table T.2. / 测试数据见表T.2。</p>	P
38.3.4.3	Test T.3: Vibration/振动		P
	<p>Cells and batteries are firmly secured to the platform of the vibration machine without distorting the cells in such a manner as to faithfully transmit the vibration. The vibration shall be a sinusoidal waveform with a logarithmic sweep between 7 Hz and 200 Hz and back to 7 Hz traversed in 15 minutes. This cycle shall be repeated 12 times for a total of 3 hours for each of three mutually perpendicular mounting positions of the cell. One of the directions of vibration must be perpendicular to the terminal face. /样品必须牢固地安装在振动台台面上。振动以正弦波形式，以7Hz增加至200Hz，然后减少回到7Hz为一个循环，一个循环持续15分钟。对样品从三个互相垂直的方向上循环12次，共3个小时。其中一个振动方向必须是垂直样品的极性平面。</p>		P
	<p>The logarithmic frequency sweep shall differ for cells and batteries with a gross mass of not more than 12 kg (cells and small batteries), and for batteries with a gross mass of more than 12 kg (large batteries). /对于质量不大于12kg的样品(电芯和小电池)和质量超过12kg的电池(大电池)，对数扫频不同。</p>		P



条款/Clause	标准要求/ Requirement + Test	结果 / Result	判定/ Verdict
	For cells and small batteries: from 7 Hz a peak acceleration of 1 gn is maintained until 18 Hz is reached. The amplitude is then maintained at 0.8 mm (1.6 mm total excursion) and the frequency increased until a peak acceleration of 8 gn occurs (approximately 50 Hz). A peak acceleration of 8 gn is then maintained until the frequency is increased to 200 Hz. /对于电芯和小电池，对数扫频为：从7Hz开始保持1gn的最大加速度直到频率为18Hz，然后将振幅保持在0.8mm (总偏移1.6mm) 并增加频率直到最大加速度达到8gn (频率约为50Hz)，将最大加速度保持在8gn直到频率增加到200Hz。		P
	For large batteries: from 7 Hz to a peak acceleration of 1 gn is maintained until 18 Hz is reached. The amplitude is then maintained at 0.8 mm (1.6 mm total excursion) and the frequency increased until a peak acceleration of 2 gn occurs (approximately 25 Hz). A peak acceleration of 2 gn is then maintained until the frequency is increased to 200 Hz. /对于大电池，对数扫频为：从7Hz开始保持1gn的最大加速度直到频率为18Hz，然后将振幅保持在0.8mm (总偏移1.6mm) 并增加频率直到最大加速度达到2gn (频率约为25Hz)，将最大加速度保持在2gn直到频率增加到200Hz。		N/A
	Cells and batteries meet this requirement if there is no leakage, no venting, no disassembly, no rupture and no fire during the test and after the test and if the open circuit voltage of each test cell or battery directly after testing in its third perpendicular mounting position is not less than 90% of its voltage immediately prior to this procedure. The requirement relating to voltage is not applicable to test cells and batteries at fully discharged states./电芯和电池符合要求：无质量损失、无漏液、无冒烟、无分解、无破裂以及无着火现象；电芯或电池测试后的开路电压不低于测试前开路电压的90%。此项关于电压方面的要求不适用于完全放电后的电芯和电池。	No leakage, no venting, no disassembly, no rupture and no fire. / 无漏液、无冒烟、无分解、无破裂以及无着火现象。 The data see table T.3. / 测试数据见表T.3。	P
38.3.4.4	Test T.4: Shock/冲击		P



条款/Clause	标准要求/ Requirement + Test	结果 / Result	判定/ Verdict							
	<p>Test cells and batteries shall be secured to the testing machine by means of a rigid mount which will support all mounting surfaces of each test battery.</p> <p>Each cell shall be subjected to a half-sine shock of peak acceleration of 150 gn and pulse duration of 6 milliseconds. Alternatively, large cells may be subjected to a half-sine shock of peak acceleration of 50 gn and pulse duration of 11 milliseconds.</p> <p>Each battery shall be subjected to a half-sine shock of peak acceleration depending on the mass of the battery. The pulse duration shall be 6 milliseconds for small batteries and 11 milliseconds for large batteries. The formulas below are provided to calculate the appropriate minimum peak accelerations. /以稳固的托架固定住每个电池/电芯样品，每个样品应该经受峰值加速度为150gn以及脉冲持续时间为6ms的半正弦冲击，另外，大型电池/电芯应该经受峰值加速度为50gn以及脉冲持续时间为11ms的半正弦冲击。</p> <p>每一个电池将受到一个半正弦冲击的峰值加速度取决于电池的质量。对于小型电池，脉冲持续时间为6毫秒，对于大型电池，脉冲时间为11毫秒。下面提供的公式用来计算适当的最小峰值加速度。</p>		P							
	<table><tr><th>Battery</th><th>Minimum peak acceleration</th><th>Pulse duration</th></tr><tr><td rowspan="2">Small batteries</td><td>150 gn or result of formula Acceleration(g_n)=$\sqrt{\frac{100850}{\text{mass}^*}}$ Acceleration gn whichever is smaller</td><td rowspan="2">6 ms</td></tr><tr><td>50 gn or result of formula Acceleration(g_n)=$\sqrt{\frac{30000}{\text{mass}^*}}$ Acceleration gn whichever is smaller</td></tr></table> <p>*Mass is expressed in kilograms</p>	Battery	Minimum peak acceleration	Pulse duration	Small batteries	150 gn or result of formula Acceleration(g _n)= $\sqrt{\frac{100850}{\text{mass}^*}}$ Acceleration gn whichever is smaller	6 ms	50 gn or result of formula Acceleration(g _n)= $\sqrt{\frac{30000}{\text{mass}^*}}$ Acceleration gn whichever is smaller	150gn	P
Battery	Minimum peak acceleration	Pulse duration								
Small batteries	150 gn or result of formula Acceleration(g _n)= $\sqrt{\frac{100850}{\text{mass}^*}}$ Acceleration gn whichever is smaller	6 ms								
	50 gn or result of formula Acceleration(g _n)= $\sqrt{\frac{30000}{\text{mass}^*}}$ Acceleration gn whichever is smaller									



条款/Clause	标准要求/ Requirement + Test	结果 / Result	判定/ Verdict
	Cells and batteries meet this requirement if there is no mass loss, no leakage, no venting, no disassembly, no rupture and no fire and if the open circuit voltage of each test cell or battery after testing is not less than 90% of its voltage immediately prior to this procedure. The requirement relating to voltage is not applicable to test cells and batteries at fully discharged states. / 电芯和电池符合要求: 无质量损失、无漏液、无冒烟、无分解、无破裂以及无着火现象; 电芯或电池测试后的开路电压不低于测试前开路电压的90%。 此项关于电压方面的要求不适用于完全放电后的电芯和电池。	No leakage, no venting, no disassembly, no rupture and no fire. / 无漏液、无冒烟、无分解、无破裂以及无着火现象。 The data see table T.4. / 测试数据见表T.4。	P
38.3.4.5	Test T.5: External short circuit/外部短路		P
	The cell or battery to be tested shall be shall be temperature stabilized so that its external case temperature reaches $57\pm4^{\circ}\text{C}$ and then the cell or battery shall be subjected to a short circuit condition with a total external resistance of less than 0.1 ohm at $57\pm4^{\circ}\text{C}$. This short circuit condition is continued for at least one hour after the cell or battery external case temperature has returned to $57\pm4^{\circ}\text{C}$. /保持测试环境温度稳定在 $57\pm4^{\circ}\text{C}$, 以便样品外表温度达到 $57\pm4^{\circ}\text{C}$, 然后将样品正负极用小于0.1欧姆的总电阻回路进行短路, 样品的外表温度恢复到 $57\pm4^{\circ}\text{C}$ 之后保持短路状态1小时以上。		P
	Cells and batteries meet this requirement if their external temperature does not exceed 170°C and there is no disassembly, no rupture and no fire during the test and within six hours after the test./电芯和电池符合要求: 在测试过程中以及之后6个小时内, 外表温度不超过 170°C , 并且无分解、无破裂和无着火现象发生。	No disassembly, no rupture and no fire during the test and within six hours after the test./在测试过程中以及之后6个小时内, 外表温度不超过 170°C , 并且无分解、无破裂和无着火现象发生。 The data see table T.5. / 测试数据见表T.5。	P
38.3.4.6	Test T.6: Impact / Crush/撞击/挤压		P
	Test procedure – Impact (applicable to cylindrical cells greater than or equal to 18 mm in diameter) /撞击(适合于直径大于或等于18mm的圆柱形电芯)	26650 cell/26650电芯	P



条款/Clause	标准要求/ Requirement + Test	结果 / Result	判定/ Verdict
	The sample cell or component cell is to be placed on a flat smooth surface. A 15.8 mm \pm 0.1mm diameter, at least 6 cm long, or the longest dimension of the cell, whichever is greater, Type 316 stainless steel bar is to be placed across the centre of the sample. A 9.1 kg \pm 0.1 kg mass is to be dropped from a height of 61 \pm 2.5 cm at the intersection of the bar and sample in a controlled manner using a near frictionless, vertical sliding track or channel with minimal drag on the falling mass. The vertical track or channel used to guide the falling mass shall be oriented 90 degrees from the horizontal supporting surface. /将样品放在一个平坦的光滑平面上。将一直径为15.8 mm \pm 0.1mm，长度不小于6cm的316不锈钢棒横过样品中部放置后，将一质量为9.1 kg \pm 0.1 kg的重物从61 \pm 2.5 cm的高度落向样品		P
	The test sample is to be impacted with its longitudinal axis parallel to the flat surface and perpendicular to the longitudinal axis of the 15.8 mm \pm 0.1mm diameter curved surface lying across the centre of the test sample. Each sample is to be subjected to only a single impact. /接受撞击的样品，纵轴应与平坦的表面平行并与横放在样品中心的直径15.8 mm \pm 0.1mm弯曲表面的纵轴垂直。每一个样品只接受一次撞击。		P
	Test Procedure – Crush (applicable to prismatic, pouch, coin/button cells and cylindrical cells not more than 18 mm in diameter). /挤压 (适用于棱柱形、袋状、硬币/纽扣电芯和直径不超过18mm的圆柱形电芯)	26650 cell/26650电芯	N/A
	A cell or component cell is to be crushed between two flat surfaces. The crushing is to be gradual with a speed of approximately 1.5 cm/s at the first point of contact. The crushing is to be continued until the first of the three options below is reached. /将样品放在两个平面之间挤压，挤压力度逐渐加大，在第一个接触点上的速度大约为1.5cm/s。挤压持续进行，直到出现以下三种情况之一		N/A
	(a) The applied force reaches 13kN \pm 0.78kN; /施加力达到13kN \pm 0.78kN		N/A
	(b) The voltage of the cell drops by at least 100 mV; /样品的电压下降至少100mV		N/A
	(c) The cell is deformed by 50% or more of its original thickness. /电池变形达原始厚度的50%以上。		N/A



条款/Clause	标准要求/ Requirement + Test	结果 / Result	判定/ Verdict
	A prismatic or pouch cell shall be crushed by applying the force to the widest side. A button/coin cell shall be crushed by applying the force on its flat surfaces. For cylindrical cells, the crush force shall be applied perpendicular to the longitudinal axis. /棱柱形或袋状电芯应从最宽的一面施压。纽扣/硬币电芯应从其平坦表面施压。圆柱形应从与纵轴垂直的方向施压。		N/A
	Each test cell or component cell is to be subjected to one crush only. The test sample shall be observed for a further 6 h. The test shall be conducted using test cells or component cells that have not previously been subjected to other tests./每个样品都是全新样品，并且只经受一次施压。施压结束后样品应静置观察6小时。		N/A
	Cells and component cells meet this requirement if their external temperature does not exceed 170°C and there is no disassembly and no fire during the test and within six hours after this test. /电芯满足要求：在测试过程中以及之后6个小时内，外表温度不超过170°C，并且无分解和无着火现象发生。	No disassembly and no fire. /无分解，无着火现象发生。 The data see table T.6. / 测试数据见表T.6。	P
38.3.4.7	Test T.7: Overcharge/过充电		P
	The charge current shall be twice the manufacturer's recommended maximum continuous charge current. Tests are to be conducted at ambient temperature. The duration of the test shall be 24 hours. The minimum voltage of the test shall be as follows: /在室温下，以2倍的制造商宣称的最大持续充电电流对样品充电，测试时间为24小时。测试的最小电压如下：		P
	(a) When the manufacturer's recommended charge voltage is not more than 18V, the minimum voltage of the test shall be the lesser of two times the maximum charge voltage of the battery or 22V. /如果制造商宣称的充电电压不超过18V，本测试的最小充电电压应是制造商宣称的最大充电电压的两倍或者是22V之中的较小者。	The voltage of the test is 8.4V, and the current is 5.5A. / 测试电压为8.4V, 电流为5.5A.	P
	(b) When the manufacturer's recommended charge voltage is more than 18V, the minimum voltage of the test shall be 1.2 times the maximum charge voltage. /如果制造商宣称的充电电压超过18V，本测试的最小充电电压应该是制造商宣称的最大充电电压的1.2倍。		N/A



条款/Clause	标准要求/ Requirement + Test	结果 / Result	判定/ Verdict
	There is no disassembly and no fire during the test and within seven days after the test. /在测试中和测试完成后7天内，样品无分解和无着火现象。	No disassembly and no fire. /无分解，无着火现象发生。 The data see table T.7. /测试数据见表T.7。	P
38.3.4.8	Test T.8: Forced discharge/强制放电		P
	Each cell shall be forced discharged at ambient temperature by connecting it in series with a 12V D.C. power supply at an initial current equal to the maximum discharge current specified by the manufacturer. /在室温下，将单个电芯连接在12V的直流电源上进行强制放电，此直流电源供给每个电芯初始电流为制造商宣称的最大放电电流。 The specified discharge current is to be obtained by connecting a resistive load of the appropriate size and rating in series with the test cell. Each cell shall be forced discharged for a time interval (in hours) equal to its rated capacity divided by the initial test current (in ampere). /指定的放电电流通过串联在测试电芯上的合适大小和功率的负载来获得，每个电芯的强制放电时间(小时)为额定容量除以初始电流(安培)。		P
	There is no disassembly and no fire during the test and within seven days after the test./在测试中和测试完成后7天内，样品无分解和无着火现象发生	No disassembly and no fire. /无分解和无着火现象发生。 The data see table T.8. /测试数据见表T.8	P



T.1. Altitude simulation 高度模拟

The state of cells 样品状态	No. 编号	Pre-test 试验前		After test 试验后		Mass loss 质量损失 (%)	Voltage after test/Voltage pre-test 试验后电压/试验前电压 (%)	Status 结果
		Mass 质量 (g)	Voltage 电压 (V)	Mass 质量 (g)	Voltage 电压 (V)			
at first cycle, in fully charged states 第一次循环后满电状态	B01	95.159	4.188	95.157	4.187	0.002	99.976	Pass 合格
	B02	95.383	4.189	95.383	4.189	0.000	100.000	Pass 合格
	B03	95.038	4.188	95.037	4.188	0.001	100.000	Pass 合格
	B04	94.685	4.190	94.684	4.189	0.001	99.976	Pass 合格
	B05	95.087	4.187	95.086	4.187	0.001	100.000	Pass 合格
after 25 cycles ending in fully charged states 在25次循环后满充状态	B06	95.370	4.188	95.369	4.188	0.001	100.000	Pass 合格
	B07	94.993	4.189	94.992	4.187	0.001	99.952	Pass 合格
	B08	94.992	4.189	94.992	4.189	0.000	100.000	Pass 合格
	B09	95.035	4.189	95.033	4.187	0.002	99.952	Pass 合格
	B10	94.483	4.188	94.482	4.187	0.001	99.976	Pass 合格
Notes 注释: Atmospheric pressure 大气压强: $1.013 \times 10^5 \text{ Pa}$, Ambient temperature 环境温度: 23.0°C After the test, there is no leakage, no venting, no disassembly, no rupture and no fire. 测试后, 电池未渗漏、未泄气、未解体、未破裂和未起火。								

T.2. Thermal test 温度试验

The state of cells 样品状态	No. 编号	Pre-test 试验前		After test 试验后		Mass loss 质量损失 (%)	Voltage after test/Voltage pre-test 试验后电压/试验前电压 (%)	Status 结果
		Mass 质量 (g)	Voltage 电压 (V)	Mass 质量 (g)	Voltage 电压 (V)			
at first cycle, in fully charged states 第一次循环后满电状态	B01	95.157	4.187	95.154	4.142	0.003	98.925	Pass 合格
	B02	95.383	4.189	95.380	4.145	0.003	98.950	Pass 合格
	B03	95.037	4.188	95.035	4.148	0.002	99.045	Pass 合格
	B04	94.684	4.189	94.680	4.144	0.004	98.926	Pass 合格
	B05	95.086	4.187	95.083	4.146	0.003	99.021	Pass 合格
after 25 cycles ending in fully charged states 在25次循环后满充状态	B06	95.369	4.188	95.366	4.145	0.003	98.973	Pass 合格
	B07	94.992	4.187	94.990	4.145	0.002	98.997	Pass 合格
	B08	94.992	4.189	94.989	4.143	0.003	98.902	Pass 合格
	B09	95.033	4.187	95.029	4.146	0.004	99.021	Pass 合格
	B10	94.482	4.187	94.479	4.146	0.003	99.021	Pass 合格
Notes 注释: Atmospheric pressure 大气压强: $1.013 \times 10^5 \text{ Pa}$, Ambient temperature 环境温度: 23.2°C After the test, there is no leakage, no venting, no disassembly, no rupture and no fire. 测试后, 电池未渗漏、未泄气、未解体、未破裂和未起火。								



T.3. Vibration 振动

The state of cells 样品状态	No. 编号	Pre-test 试验前		After test 试验后		Mass loss 质量损失 (%)	Voltage after test/Voltage pre-test 试验后电压/试验前电压 (%)	Status 结果
		Mass 质量 (g)	Voltage 电压 (V)	Mass 质量 (g)	Voltage 电压 (V)			
at first cycle, in fully charged states 第一次循环后满电状态	B01	95.154	4.142	95.153	4.141	0.001	99.976	Pass 合格
	B02	95.380	4.145	95.380	4.145	0.000	100.000	Pass 合格
	B03	95.035	4.148	95.035	4.148	0.000	100.000	Pass 合格
	B04	94.680	4.144	94.678	4.143	0.002	99.976	Pass 合格
	B05	95.083	4.146	95.082	4.145	0.001	99.976	Pass 合格
after 25 cycles ending in fully charged states 在25次循环后满充状态	B06	95.366	4.145	95.365	4.144	0.001	99.976	Pass 合格
	B07	94.990	4.145	94.989	4.143	0.001	99.952	Pass 合格
	B08	94.989	4.143	94.989	4.143	0.000	100.000	Pass 合格
	B09	95.029	4.146	95.029	4.146	0.000	100.000	Pass 合格
	B10	94.479	4.146	94.478	4.145	0.001	99.976	Pass 合格
Notes 注释: Atmospheric pressure 大气压强: $1.013 \times 10^5 \text{ Pa}$, Ambient temperature 环境温度: 23.7°C After the test, there is no leakage, no venting, no disassembly, no rupture and no fire. 测试后, 电池未渗漏、未泄气、未解体、未破裂和未起火。								

T.4. Shock 冲击

The state of cells 样品状态	No. 编号	Pre-test 试验前		After test 试验后		Mass loss 质量损失 (%)	Voltage after test/Voltage pre-test 试验后电压/试验前电压 (%)	Status 结果
		Mass 质量 (g)	Voltage 电压 (V)	Mass 质量 (g)	Voltage 电压 (V)			
at first cycle, in fully charged states 第一次循环后满电状态	B01	95.153	4.141	95.153	4.141	0.000	100.000	Pass 合格
	B02	95.380	4.145	95.380	4.145	0.000	100.000	Pass 合格
	B03	95.035	4.148	95.035	4.148	0.000	100.000	Pass 合格
	B04	94.678	4.143	94.677	4.142	0.001	99.976	Pass 合格
	B05	95.082	4.145	95.081	4.144	0.001	99.976	Pass 合格
after 25 cycles ending in fully charged states 在25次循环后满充状态	B06	95.365	4.144	95.365	4.144	0.000	100.000	Pass 合格
	B07	94.989	4.143	94.989	4.143	0.000	100.000	Pass 合格
	B08	94.989	4.143	94.988	4.142	0.001	99.976	Pass 合格
	B09	95.029	4.146	95.029	4.146	0.000	100.000	Pass 合格
	B10	94.478	4.145	94.477	4.144	0.001	99.976	Pass 合格
Notes 注释: Atmospheric pressure 大气压强: $1.013 \times 10^5 \text{ Pa}$, Ambient temperature 环境温度: 23.3°C After the test, there is no leakage, no venting, no disassembly, no rupture and no fire. 测试后, 电池未渗漏、未泄气、未解体、未破裂和未起火。								



T.5. External short circuit 外部短路

The state of cells 样品状态	No. 编号	External Peak temperature(°C) 电池表面最高温度(°C)	Status 结果
at first cycle, in fully charged states 第一次循环后满电状态	B01	61.4	Pass合格
	B02	59.3	Pass合格
	B03	58.7	Pass合格
	B04	60.7	Pass合格
	B05	61.6	Pass合格
after 25 cycles ending in fully charged states 在25次循环后满充状态	B06	60.3	Pass合格
	B07	60.4	Pass合格
	B08	59.3	Pass合格
	B09	58.9	Pass合格
	B10	60.1	Pass合格
Notes 注释: Atmospheric pressure 大气压强: $1.013 \times 10^5 \text{ Pa}$, Ambient temperature 环境温度: 57°C There is no disassembly, no rupture and no fire within six hours after test. 电池在测试后6小时内未解体、未破裂、未起火。			

T.6. Impact 撞击

The state of cells 样品状态	No. 编号	External Peak temperature(°C) 电池表面最高温度(°C)	Status 结果
At first cycle at 50% of the design rated capacity 在第一次充放电周期后保持额定容量为50%的荷电状态	C01	24.1	Pass合格
	C02	25.0	Pass合格
	C03	24.6	Pass合格
	C04	24.6	Pass合格
	C05	23.9	Pass合格
After 25 cycles ending at 50% of the design rated capacity 25次充放电周期后保持额定容量为50%的荷电状态	C06	24.3	Pass合格
	C07	24.9	Pass合格
	C08	24.8	Pass合格
	C09	24.7	Pass合格
	C10	25.1	Pass合格
Notes 注释: Atmospheric pressure 大气压强: $1.013 \times 10^5 \text{ Pa}$, Ambient temperature 环境温度: 23.0°C There is no disassembly, no rupture and no fire within six hours after test. 电池在测试后6小时内未解体、未起火。			



T.7. Overcharge过充电

The state of cells 样品状态	No. 编号	Status 结果
at first cycle, in fully charged states 第一次循环后满电状态	B11	Pass合格
	B12	Pass合格
	B13	Pass合格
	B14	Pass合格
after 25 cycles ending in fully charged states 在25次循环后满充状态	B15	Pass合格
	B16	Pass合格
	B17	Pass合格
	B18	Pass合格

T.8. Forced discharge强制放电

The state of cells 样品状态	No. 编号	Status 结果
at first cycle, in fully discharged states 第一次循环后完全放电状态	C11	Pass合格
	C12	Pass合格
	C13	Pass合格
	C14	Pass合格
	C15	Pass合格
	C16	Pass合格
	C17	Pass合格
	C18	Pass合格
	C19	Pass合格
	C20	Pass合格
after 25 cycles ending in fully discharged states 在25次循环后完全放电状态	C21	Pass合格
	C22	Pass合格
	C23	Pass合格
	C24	Pass合格
	C25	Pass合格
	C26	Pass合格
	C27	Pass合格
	C28	Pass合格
	C29	Pass合格
	C30	Pass合格
Notes 注释: Atmospheric pressure 大气压强: $1.013 \times 10^5 \text{ Pa}$, Ambient temperature 环境温度: 23.5°C There is no disassembly and no fire during the test and within seven days after the test. 电芯在测试中和测试测试后7天内未解体, 未着火。		



样品图片/Photo Documentation:



Fig. 1



Fig. 2

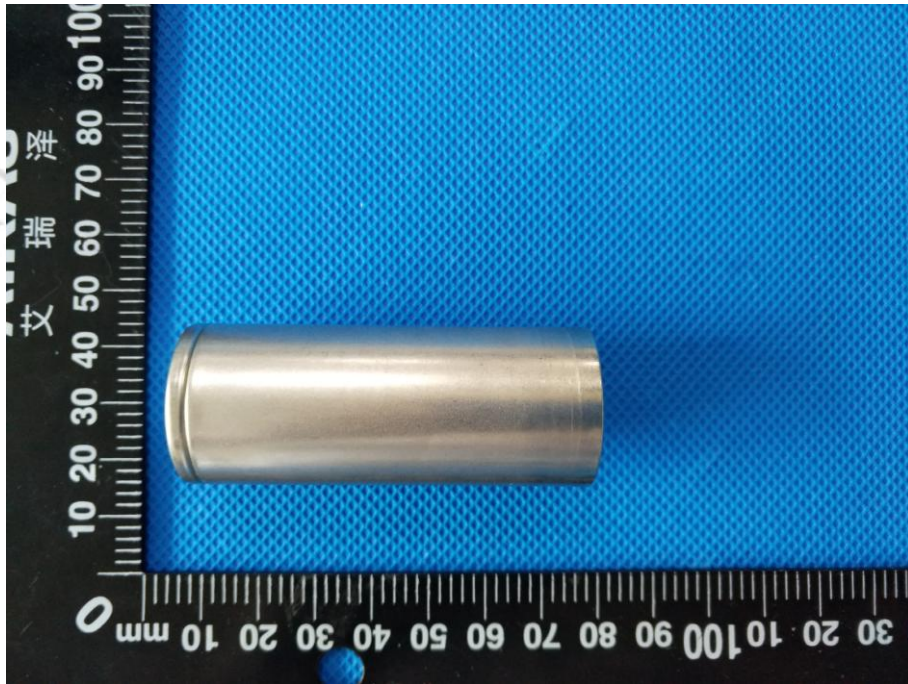


Fig. 3



Fig. 4

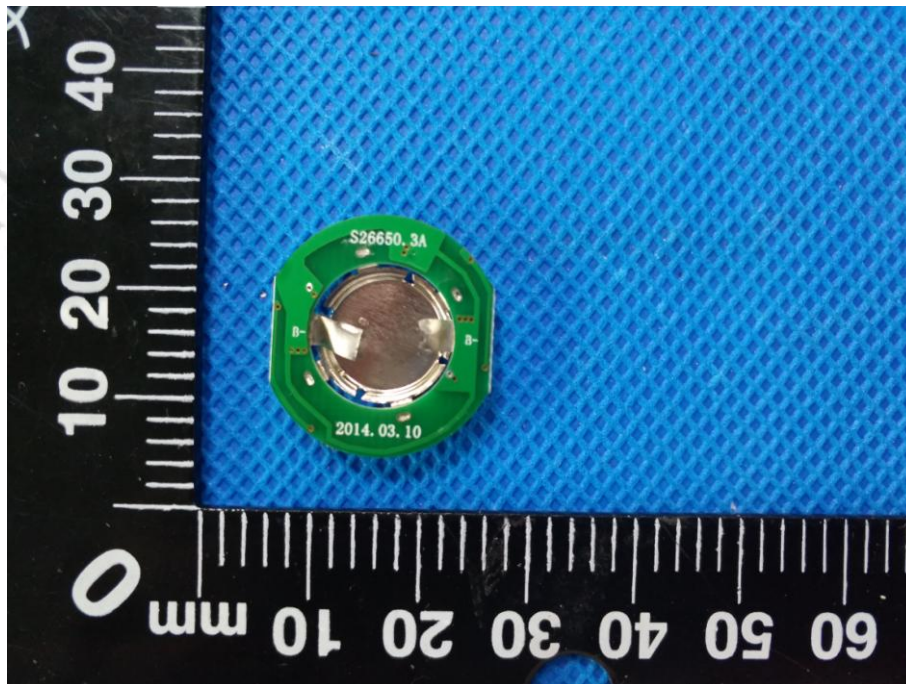


Fig. 5

.....END.....



试验仪器设备清单 / Test Equipment List:

序号 / No.	编号/ Code	名称 / Equipment name	型号 / Type	本次使用 Used (√)
1.	BCTC-SA-300	振动试验机 / Vibration Tester	EV103	√
2.	BCTC-SA-301	加速度冲击试验机 / Shock Tester	HSKT10	√
3.	BCTC-SA-302	电池低压高空模拟试验机 / Altitude Simulation Tester	GX-3020-Z	√
4.	BCTC-SA-305	温控型短路试验机 / Thermal Control Short Tester	GX-6055-B	√
5.	BCTC-SA-368	电池冲击试验机 / Battery Impact Tester	BE-5066	√
6.	BCTC-SA-346	电池挤压试验机 / Crush Tester	BE-6045-2T	
7.	BCTC-SA-309	可编程恒温恒湿试验箱 / Temp & Humi. Chamber	GX-3000-80LT	√
8.	BCTC-SA-311	电池过充过放防爆试验箱 / Explosion Chamber	GX-FB-200	√
9.	BCTC-SA-312	瑞能充放电仪 / Charging and Discharge Tester	CTS-5V5A	√
10.	BCTC-SA-315	瑞能充放电仪 / Charging and Discharge Tester	PBTS-20V5A	√
11.	BCTC-SA-318	瑞能充放电仪 / Charging and Discharge Tester	CDS 60V10A	√
12.	BCTC-SA-330	温升记录仪 / Temperature Recorder	LD302AG	
13.	BCTC-SA-372	可编程恒温恒湿试验箱 / Temp & Humi. Chamber	BTKS5-150C	
14.	BCTC-SA-363	DC直流电源 / Direct-current	IT6502D	
15.	BCTC-SA-360	电子负载 / Direct-current load	IT8512A+	
16.	BCTC-SA-355	电子天平 / Electric Scale	JJ1523BC	√
17.	BCTC-SA-356	电子天平 / Electric Scale	TC-20KB	
18.	BCTC-SA-371	高性能电池检测系统 Battery Testing system	CT-4002-60V50A-NA	
19.	BCTC-SA-339	毫欧表 milliohm meter	VC480C+	√
20.	BCTC-SA-357	多路温度测试仪 Multichannel temperature tester	AT4516	√
21.	BCTC-SA-353	移动电源测试系统 Mobile power supply test system	BTS -6V4A	

注：以上仪器设备均在计量校准周期内。

Remark: The above equipment are within the calibration cycle.



声 明 STATEMENT

1. 本次检测所用的测量设备的量值均可以溯源到国家计量标准。
The equipment lists are traceable to the national reference standards.
2. 检测报告未经本实验室书面批准，不得部分复制。
The test report can not be partially copied unless prior written approval is issued from our lab.
3. 报告未加盖“检测专用章”无效。
The test report is invalid without stamp of laboratory.
4. 报告无检测、批准人员签字无效。
The test report is invalid without signature of person(s) testing and authorizing.
5. 本次检测的结果仅对所检测样品有效。
The test process and test result is only related to the Unit Under Test.
6. 本实验室的质量体系符合**ISO/IEC17025**标准的要求。
The quality system of our laboratory is in accordance with ISO/IEC17025.
7. 如对本报告有异议，可在收到报告后**15** 天内向本单位申诉，逾期不予受理。
If there is any objection to report, the client should inform issuing laboratory within 15 days from the date of receiving test report.

地址：深圳市宝安区福永街道桥头社区福园一路鹏洲工业园B栋东面1楼2楼及倍测大厦 邮政编码/P.C.: 518109
Address: BCTC Building & 1-2F, East of B Building, Pengzhou Industrial, Fuyuan 1st Road, Qiaotou
Community, Fuyong Street, Bao'an District, Shenzhen, China
电话/TEL: 400-788-9558 传真/FAX: 0755-36882589
网址/ Web.: <http://www.bctc-lab.com.cn> 电子信箱/E-Mail: bct@bctc-lab.com.cn