



倍测检测  
BCTC TEST

# Test Report

No. BCTC-FYC170091941R

Date: Sep. 14, 2017

Page 1 of 9

**Applicant** : Shenzhen Soshine Battery Co., Ltd.  
**Address** : 4F East, Xinyuke Complex Building, Ronghongtai Property Management, Langkou Industrial Park, Dalang St., Longhua Dist., Shenzhen 518109, P.R. China

The submitted sample and sample information was/were submitted and identified by/on the behalf of the client

**Sample name** : Soshine LiFePO<sub>4</sub> RCR123 16340 Battery: 500mAh 3.2V

**Type /model** : CR123-3.2-500

**Trademark** :

**Soshine**

**Manufacturer** : Shenzhen Soshine Battery Co., Ltd.

**Address** : 4F East, Xinyuke Complex Building, Ronghongtai Property Management, Langkou Industrial Park, Dalang St., Longhua Dist., Shenzhen 518109, P.R. China

**Sample received date** : Sep. 07, 2017

**Testing period** : Sep. 07, 2017 - Sep. 14, 2017

**Test requested** : 1. As specified by client, to screen Lead(Pb), Cadmium(Cd), Mercury(Hg), Chromium(Cr) and Bromine(Br) in the submitted sample(s) by XRF.  
2. As specified by client, when screening results exceed the XRF screening limit in IEC 62321-3-1:2013, further use of chemical methods are required to test the Lead(Pb), Cadmium(Cd), Mercury(Hg), Hexavalent Chromium(Cr(VI)), Polybrominated Biphenyls(PBBs), Polybrominated Diphenyl Ethers(PBDEs) in the submitted samples.

According to the RoHS Directive 2011/65/EU

\*\*\*\*\*For more detailed information, please refer to the next page\*\*\*\*\*

Tested by

*Judy Zou*

Approved by

*Linhang*



Lab:Shenzhen BCTC Testing Co.,Ltd.

Add:BCTC Building & 1-2F,East of B Building,pengzhou Industrial,Fuyuan 1st Road,  
Qiaotou Community,Fuyong Street, Bao'an District,Shenzhen,china  
Tel : (86)0755-33229357 Fax : 0755-33229357



Hotline  
400-788-9558  
www.bctc-lab.com.cn



# Test Report

No. BCTC-FYC170091941R

Date: Sep. 14, 2017

Page 2 of 9

## Test Method:

### A. Screening test by XRF spectroscopy

XRF screening limits in mg/kg for regulated elements according to IEC 62321-3-1:2013.

Element	Limit of IEC 62321-3-1:2013. Unit (mg/kg)		MDL	
	Polymers and metals	Composite material	Polymers	Other material
Pb	$BL \leq (700-3\sigma) < X < (1300+3\sigma)$ $\leq OL$	$BL \leq (500-3\sigma) < X < (1500+3\sigma)$ $\leq OL$	10 mg/kg	50 mg/kg
Cd	$BL \leq (70-3\sigma) < X < (130+3\sigma)$ $\leq OL$	$LOD \leq (50-3\sigma) < X < (150+3\sigma)$ $\leq OL$	10 mg/kg	50 mg/kg
Hg	$BL \leq (700-3\sigma) < X < (1300+3\sigma)$ $\leq OL$	$BL \leq (500-3\sigma) < X < (1500+3\sigma)$ $\leq OL$	10 mg/kg	50 mg/kg
Cr	$BL \leq (700-3\sigma) < X$	$BL \leq (500-3\sigma) < X$	10 mg/kg	50 mg/kg
Br	$BL \leq (300-3\sigma) < X$	$BL \leq (250-3\sigma) < X$	10 mg/kg	50 mg/kg

## Note:

-BL = Under the XRF screening limit

-OL = Further chemical test will be conducted while result is above the screening limit

-X= The symbol "X" marks the region where further investigation is necessary

-3σ= The reproducibility of analytical instruments

-LOD= Detection limit

### B. Chemical Test

Test Item(s)	Test Method	Measured Equipment(s)	MDL	Limit
Lead (Pb)	IEC 62321-5:2013 Ed.1.0	ICP-OES	2 mg/kg	1000 mg/kg
Cadmium (Cd)	IEC 62321-5:2013 Ed.1.0	ICP-OES	2 mg/kg	100 mg/kg
Mercury (Hg)	IEC 62321-4:2013 Ed.1.0	ICP-OES	2 mg/kg	1000 mg/kg
Hexavalent Chromium Cr(VI)	IEC 62321-7-1:2015 Ed.1.0	UV-VIS	/	1000 mg/kg
	IEC 62321-7-2:2017 Ed.1.0	UV-VIS	8 mg/kg	1000 mg/kg
Polybrominated Biphenyls (PBBs)	IEC 62321-6:2015 Ed.1.0	GC-MS	5 mg/kg	1000 mg/kg
Polybrominated Diphenyl Ethers (PBDEs)	IEC 62321-6:2015 Ed.1.0	GC-MS	5 mg/kg	1000 mg/kg

Lab: Shenzhen BCTC Testing Co., Ltd.

Add: BCTC Building & 1-2F, East of B Building, pengzhou Industrial, Fuyuan 1st Road, Qiaotou Community, Fuyong Street, Bao'an District, Shenzhen, China

Tel : (86)0755-33229357 Fax : 0755-33229357



Hotline  
400-788-9558  
www.bctc-lab.com.cn



# Test Report

No. BCTC-FYC170091941R

Date: Sep. 14, 2017

Page 3 of 9

## Test Results:

Sample No.	Sample Description	Tested Items	XRF Screening Test Unit (mg/kg)	Chemical Test Unit (mg/kg)	Conclusion
1	Silver metal shell	Pb	BL	/	PASS
		Cd	BL	/	
		Hg	BL	/	
		Cr(Cr(VI) )	BL	/	
		Br(PBBs&PBDEs)	/	/	
2	Black plastic	Pb	BL	/	PASS
		Cd	BL	/	
		Hg	BL	/	
		Cr(Cr(VI) )	BL	/	
		Br(PBBs&PBDEs)	BL	/	
3	White-blue plastic paper	Pb	BL	/	PASS
		Cd	BL	/	
		Hg	BL	/	
		Cr(Cr(VI) )	BL	/	
		Br(PBBs&PBDEs)	BL	/	
4	White plastic	Pb	BL	/	PASS
		Cd	BL	/	
		Hg	BL	/	
		Cr(Cr(VI) )	BL	/	
		Br(PBBs&PBDEs)	BL	/	
5	White plastic	Pb	BL	/	PASS
		Cd	BL	/	
		Hg	BL	/	
		Cr(Cr(VI) )	BL	/	
		Br(PBBs&PBDEs)	BL	/	
6	Transparent plastic	Pb	BL	/	PASS
		Cd	BL	/	
		Hg	BL	/	
		Cr(Cr(VI) )	BL	/	
		Br(PBBs&PBDEs)	BL	/	





# Test Report

No. BCTC-FYC170091941R

Date: Sep. 14, 2017

Page 4 of 9

7	Silver metal	Pb	BL	/	PASS
		Cd	BL	/	
		Hg	BL	/	
		Cr(Cr(VI) )	BL	/	
		Br(PBBs&PBDEs)	/	/	
8	Yellow plastic paper	Pb	BL	/	PASS
		Cd	BL	/	
		Hg	BL	/	
		Cr(Cr(VI) )	BL	/	
		Br(PBBs&PBDEs)	BL	/	
9	Plastic paper	Pb	BL	/	PASS
		Cd	BL	/	
		Hg	BL	/	
		Cr(Cr(VI) )	BL	/	
		Br(PBBs&PBDEs)	BL	/	
10	Silver metal contact	Pb	BL	/	PASS
		Cd	BL	/	
		Hg	BL	/	
		Cr(Cr(VI) )	BL	/	
		Br(PBBs&PBDEs)	/	/	

## Note:

-MDL = Method Detection Limit

-N.D. = Not Detected (<MDL)

-mg/kg = ppm = parts per million

-Negative = Absence of Cr(VI) , the detected Cr(VI) concentration in the boiling water extraction solution is less than 0.1 mg/kg with 50cm<sup>2</sup> sample surface area used.

-Positive = Presence of Cr(VI), the detected Cr(VI) concentration in the boiling water extraction solution is equal to or greater than 0.1 mg/kg with 50cm<sup>2</sup> sample surface area used.

## Remark:

- The screening results are only used for reference.

- When conducting the test for PBBs&PBDEs, XRF was introduced to screen Br Exclusively; When conducting the test for Hexavalent Chromium, XRF was introduced to screen Chromium exclusively.

Lab:Shenzhen BCTC Testing Co.,Ltd.

Add:BCTC Building & 1-2F,East of B Building,pengzhou Industrial,Fuyuan 1st Road,  
Qiaotou Community,Fuyong Street, Bao 'an District,Shenzhen,china

Tel : (86)0755-33229357 Fax : 0755-33229357



Hotline  
400 -788 -9558  
www.bctc-lab.com.cn





# Test Report

No. BCTC-FYC170091941R

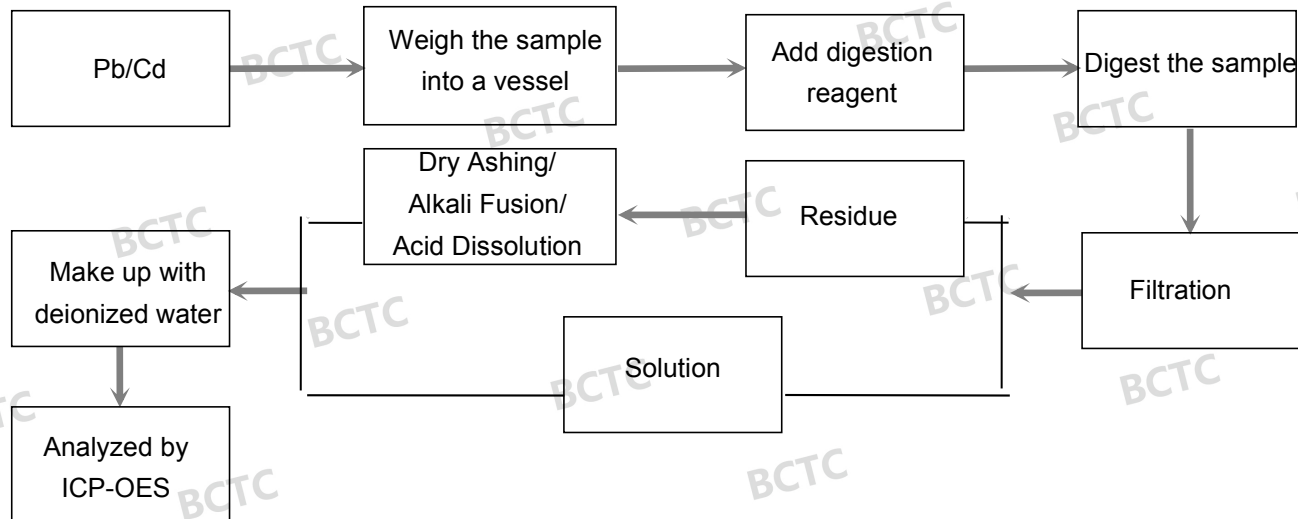
Date: Sep. 14, 2017

Page 5 of 9

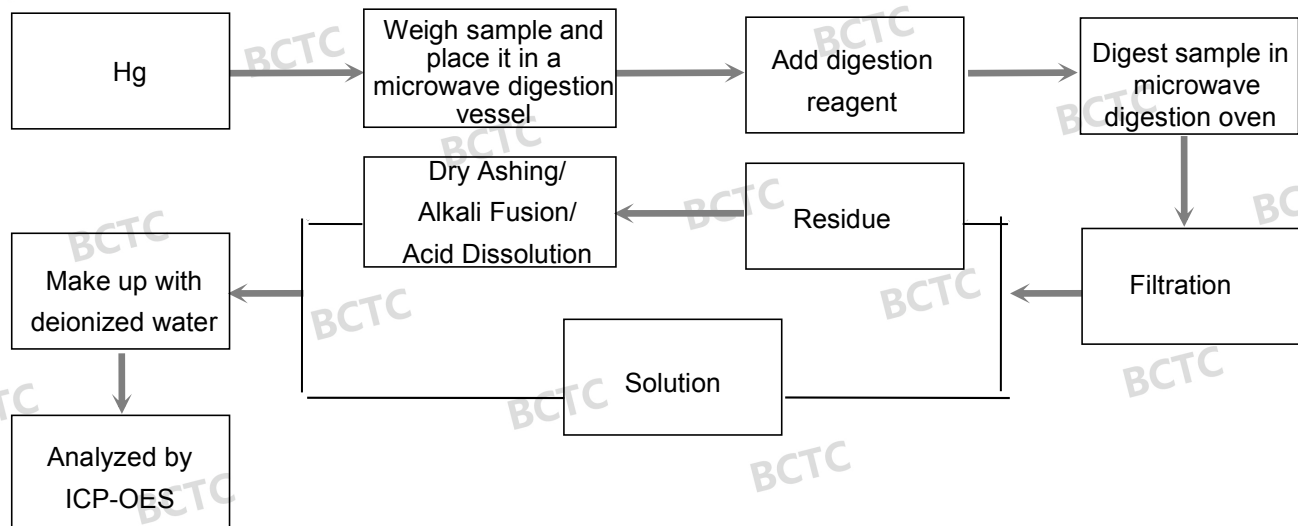
## Test Process:

The sample(s) had been dissolved totally tested for Lead, Cadmium, Mercury.

◆IEC 62321-5:2013 Ed.1.0



◆IEC 62321-4:2013 Ed.1.0





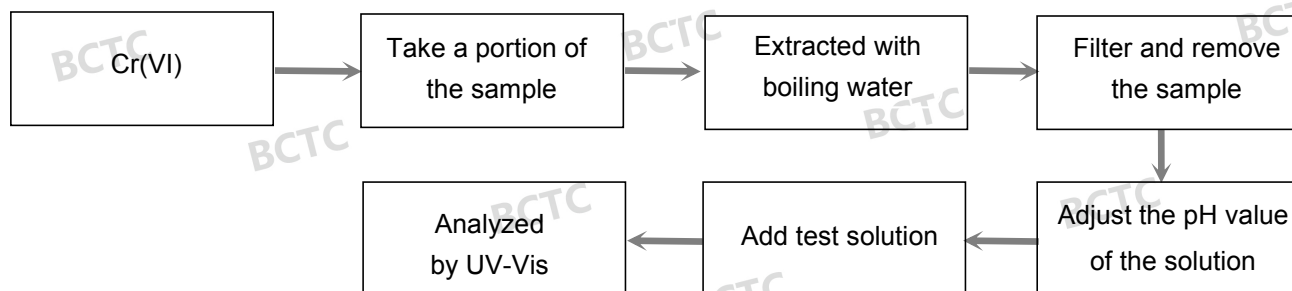
# Test Report

No. BCTC-FYC170091941R

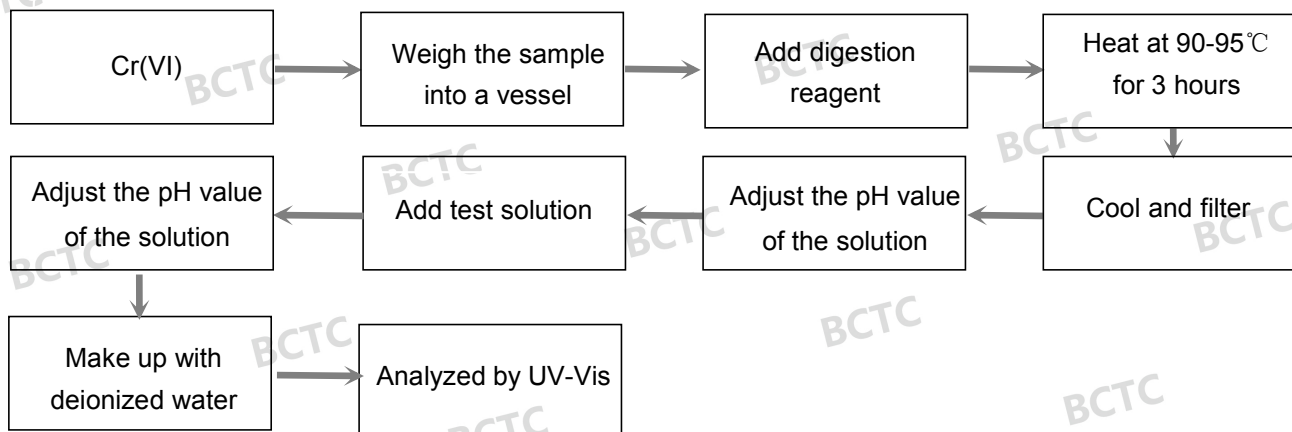
Date: Sep. 14, 2017

Page 6 of 9

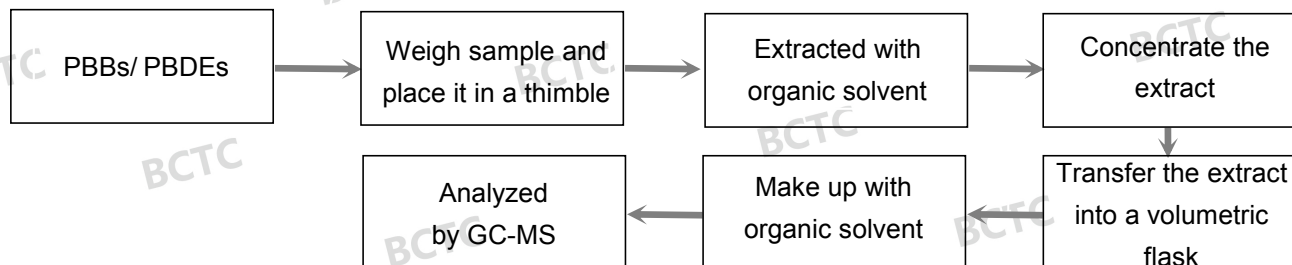
◆IEC 62321-7-1:2015 Ed.1.0



◆IEC 62321-7-2:2017 Ed.1.0



◆IEC 62321-6:2015 Ed.1.0





# Test Report

No. BCTC-FYC170091941R

Date: Sep. 14, 2017

Page 7 of 9

## Photograph of Sample

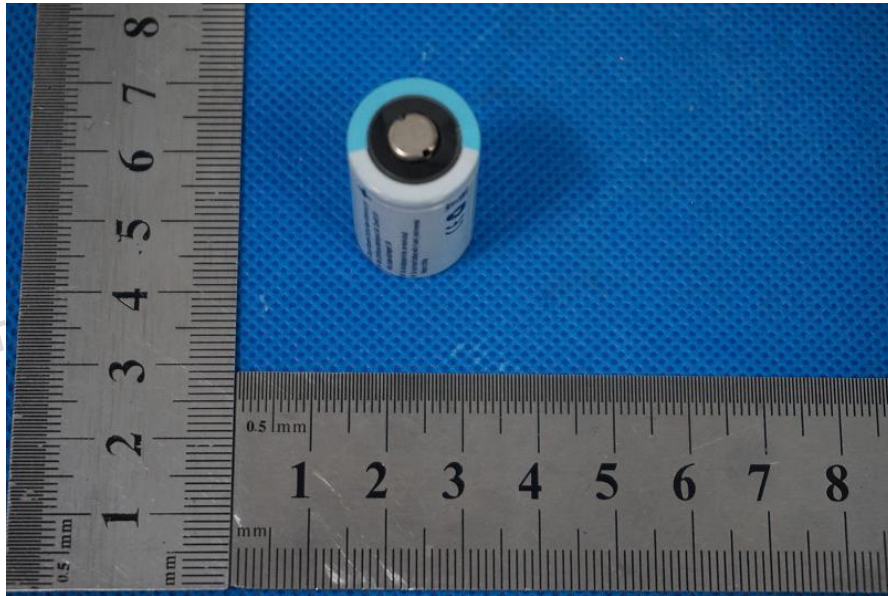


Fig. 1

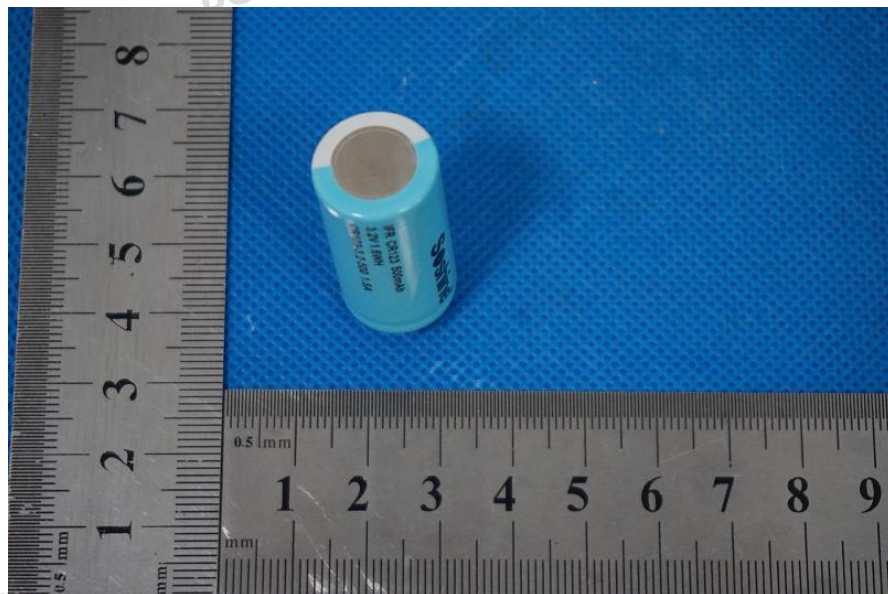


Fig. 2

Lab: Shenzhen BCTC Testing Co., Ltd.

Add: BCTC Building & 1-2F, East of B Building, pengzhou Industrial, Fuyuan 1st Road,  
Qiaotou Community, Fuyong Street, Bao'an District, Shenzhen, China

Tel : (86)0755-33229357 Fax : 0755-33229357



Hotline  
400-788-9558  
[www.bctc-lab.com.cn](http://www.bctc-lab.com.cn)





# Test Report

No. BCTC-FYC170091941R

Date: Sep. 14, 2017

Page 8 of 9

Photo(s) of the tested component(s)

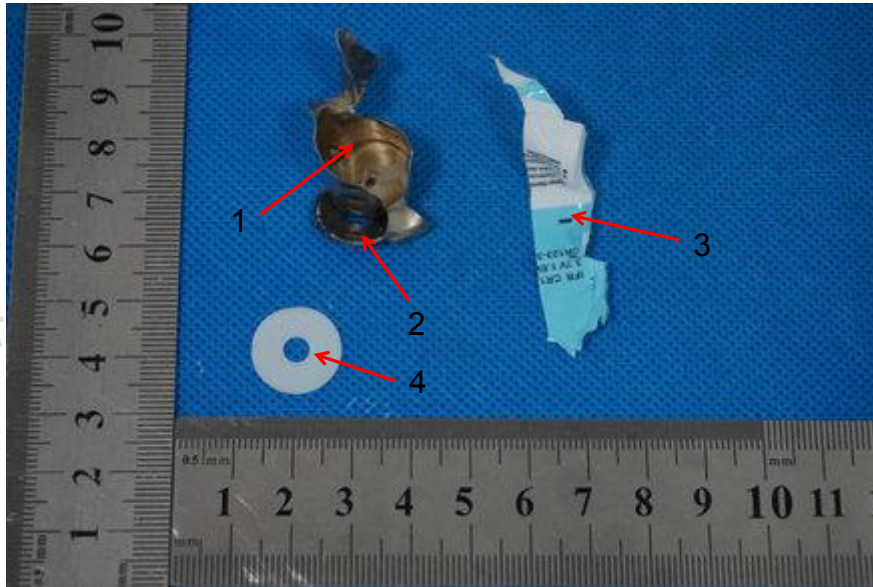


Fig. 3

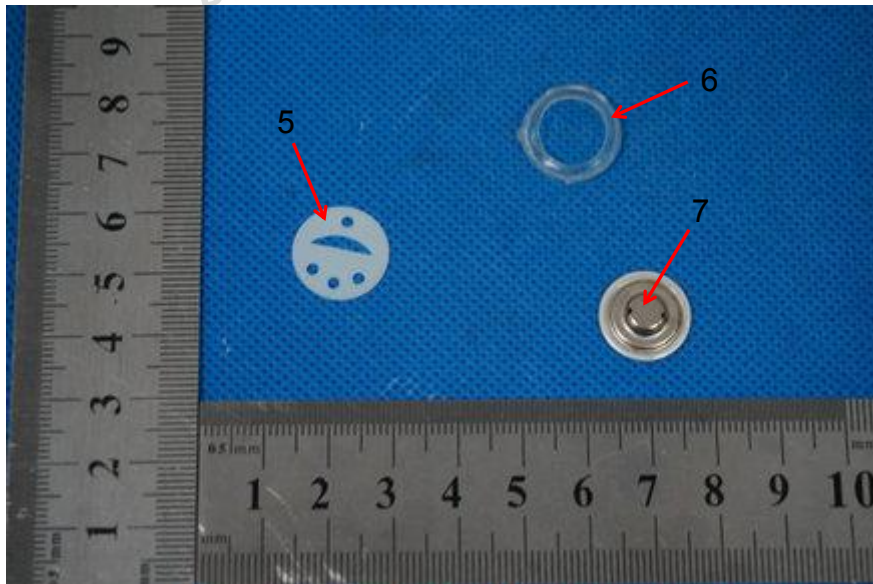


Fig. 4

Lab:Shenzhen BCTC Testing Co.,Ltd.

Add:BCTC Building & 1-2F,East of B Building,pengzhou Industrial,Fuyuan 1st Road,  
Qiaotou Community,Fuyong Street, Bao'an District,Shenzhen,china

Tel : (86)0755-33229357 Fax : 0755-33229357



Hotline  
400 -788 -9558  
www.bctc-lab.com.cn



# Test Report

No. BCTC-FYC170091941R

Date: Sep. 14, 2017

Page 9 of 9

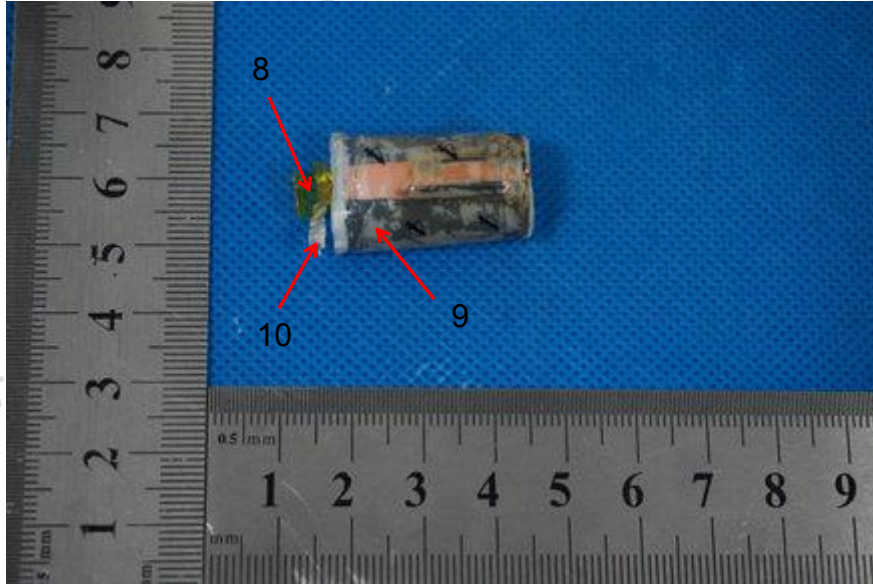


Fig. 5

\*\*\*\*\* End of Report \*\*\*\*\*

