



# Test Report

No. BCTC-FYC170091944R

Date: Sep. 14, 2017

Page 1 of 12

**Applicant** : Shenzhen Soshine Battery Co., Ltd.  
**Address** : 4F East, Xinyuke Complex Building, Ronghongtai Property Management, Langkou Industrial Park, Dalang St., Longhua Dist., Shenzhen 518109, P.R. China

The submitted sample and sample information was/were submitted and identified by/on the behalf of the client

**Sample name** : Soshine power bank charger for 18650 batterie

**Testing type /model** : E4S

**Additional type /model** : E4C, E3S

**Trademark** :

**Manufacturer** : Shenzhen Soshine Battery Co., Ltd.

**Address** : 4F East, Xinyuke Complex Building, Ronghongtai Property Management, Langkou Industrial Park, Dalang St., Longhua Dist., Shenzhen 518109, P.R. China

**Sample received date** : Sep. 07, 2017

**Testing period** : Sep. 07, 2017 - Sep. 14, 2017

**Test requested** :

- As specified by client, to screen Lead(Pb), Cadmium(Cd), Mercury(Hg), Chromium(Cr) and Bromine(Br) in the submitted sample(s) by XRF.
- As specified by client, when screening results exceed the XRF screening limit in IEC 62321-3-1:2013, further use of chemical methods are required to test the Lead(Pb), Cadmium(Cd), Mercury(Hg), Hexavalent Chromium(Cr(VI)), Polybrominated Biphenyls(PBBs), Polybrominated Diphenyl Ethers(PBDEs) in the submitted samples.

According to the RoHS Directive 2011/65/EU

\*\*\*\*\*For more detailed information, please refer to the next page\*\*\*\*\*

Tested by



Approved by

Lab:Shenzhen BCTC Testing Co.,Ltd.

Add:BCTC Building & 1-2F,East of B Building,pengzhou Industrial,Fuyuan 1st Road, Qiaotou Community,Fuyong Street, Bao 'an District,Shenzhen,china  
Tel : (86)0755-33229357 Fax : 0755-33229357

Hotline  
400 -788 -9558  
www.bctc-lab.com.cn



# Test Report

No. BCTC-FYC170091944R

Date: Sep. 14, 2017

Page 2 of 12

**Test Method:**

**A. Screening test by XRF spectroscopy**

XRF screening limits in mg/kg for regulated elements according to IEC 62321-3-1:2013.

Element	Limit of IEC 62321-3-1:2013. Unit (mg/kg)		MDL	
	Polymers and metals	Composite material	Polymers	Other material
Pb	$BL \leq (700-3\sigma) < X < (1300+3\sigma)$ $\leq OL$	$BL \leq (500-3\sigma) < X < (1500+3\sigma)$ $\leq OL$	10 mg/kg	50 mg/kg
Cd	$BL \leq (70-3\sigma) < X < (130+3\sigma)$ $\leq OL$	$LOD \leq (50-3\sigma) < X < (150+3\sigma)$ $\leq OL$	10 mg/kg	50 mg/kg
Hg	$BL \leq (700-3\sigma) < X < (1300+3\sigma)$ $\leq OL$	$BL \leq (500-3\sigma) < X < (1500+3\sigma)$ $\leq OL$	10 mg/kg	50 mg/kg
Cr	$BL \leq (700-3\sigma) < X$	$BL \leq (500-3\sigma) < X$	10 mg/kg	50 mg/kg
Br	$BL \leq (300-3\sigma) < X$	$BL \leq (250-3\sigma) < X$	10 mg/kg	50 mg/kg

**Note:**

-BL = Under the XRF screening limit

-OL = Further chemical test will be conducted while result is above the screening limit

-X= The symbol "X" marks the region where further investigation is necessary

-3σ= The reproducibility of analytical instruments

-LOD= Detection limit

**B. Chemical Test**

Test Item(s)	Test Method	Measured Equipment(s)	MDL	Limit
Lead (Pb)	IEC 62321-5:2013 Ed.1.0	ICP-OES	2 mg/kg	1000 mg/kg
Cadmium (Cd)	IEC 62321-5:2013 Ed.1.0	ICP-OES	2 mg/kg	100 mg/kg
Mercury (Hg)	IEC 62321-4:2013 Ed.1.0	ICP-OES	2 mg/kg	1000 mg/kg
Hexavalent Chromium Cr(VI)	IEC 62321-7-1:2015 Ed.1.0	UV-VIS	/	1000 mg/kg
	IEC 62321-7-2:2017 Ed.1.0		8 mg/kg	1000 mg/kg
Polybrominated Biphenyls (PBBs)	IEC 62321-6:2015 Ed.1.0	GC-MS	5 mg/kg	1000 mg/kg
Polybrominated Diphenyl Ethers (PBDEs)	IEC 62321-6:2015 Ed.1.0	GC-MS	5 mg/kg	1000 mg/kg

Lab: Shenzhen BCTC Testing Co., Ltd.

Add: BCTC Building & 1-2F, East of B Building, pengzhou Industrial, Fuyuan 1st Road, Qiaotou Community, Fuyong Street, Bao'an District, Shenzhen, China

Tel : (86)0755-33229357 Fax : 0755-33229357



Hotline  
400-788-9558  
www.bctc-lab.com.cn



# Test Report

No. BCTC-FYC170091944R

Date: Sep. 14, 2017

Page 3 of 12

**Test Results:**

Sample No.	Sample Description	Tested Items	XRF Screening Test Unit (mg/kg)	Chemical Test Unit (mg/kg)	Conclusion
1	Black plastic shell	Pb	BL	/	PASS
		Cd	BL	/	
		Hg	BL	/	
		Cr(Cr(VI) )	BL	/	
		Br(PBBs&PBDEs)	BL	/	
2	Black plastic shell	Pb	BL	/	PASS
		Cd	BL	/	
		Hg	BL	/	
		Cr(Cr(VI) )	BL	/	
		Br(PBBs&PBDEs)	BL	/	
3	Transparent plastic	Pb	BL	/	PASS
		Cd	BL	/	
		Hg	BL	/	
		Cr(Cr(VI) )	BL	/	
		Br(PBBs&PBDEs)	BL	/	
4	White paper	Pb	BL	/	PASS
		Cd	BL	/	
		Hg	BL	/	
		Cr(Cr(VI) )	BL	/	
		Br(PBBs&PBDEs)	BL	/	
5	Silver screw	Pb	BL	/	PASS
		Cd	BL	/	
		Hg	BL	/	
		Cr(Cr(VI) )	BL	/	
		Br(PBBs&PBDEs)	/	/	
6	PCB	Pb	BL	/	PASS
		Cd	BL	/	
		Hg	BL	/	
		Cr(Cr(VI) )	BL	/	
		Br(PBBs&PBDEs)	43368	N.D.	



# Test Report

No. BCTC-FYC170091944R

Date: Sep. 14, 2017

Page 4 of 12

7	IC	Pb	BL	/	PASS
		Cd	BL	/	
		Hg	BL	/	
		Cr(Cr(VI) )	BL	/	
		Br(PBBs&PBDEs)	BL	/	
8	SMD resistor	Pb	BL	/	PASS
		Cd	BL	/	
		Hg	BL	/	
		Cr(Cr(VI) )	BL	/	
		Br(PBBs&PBDEs)	BL	/	
9	SMD capacitor	Pb	BL	/	PASS
		Cd	BL	/	
		Hg	BL	/	
		Cr(Cr(VI) )	BL	/	
		Br(PBBs&PBDEs)	BL	/	
10	Tin solder	Pb	BL	/	PASS
		Cd	BL	/	
		Hg	BL	/	
		Cr(Cr(VI) )	BL	/	
		Br(PBBs&PBDEs)	/	/	
11	Gold metal	Pb	BL	/	PASS
		Cd	BL	/	
		Hg	BL	/	
		Cr(Cr(VI) )	BL	/	
		Br(PBBs&PBDEs)	/	/	
12	Silver metal	Pb	BL	/	PASS
		Cd	BL	/	
		Hg	BL	/	
		Cr(Cr(VI) )	BL	/	
		Br(PBBs&PBDEs)	/	/	
13	FPC	Pb	BL	/	PASS
		Cd	BL	/	
		Hg	BL	/	
		Cr(Cr(VI) )	BL	/	
		Br(PBBs&PBDEs)	33987	N.D.	



# Test Report

No. BCTC-FYC170091944R

Date: Sep. 14, 2017

Page 5 of 12

14	Display screen	Pb	BL	/	PASS
		Cd	BL	/	
		Hg	BL	/	
		Cr(Cr(VI) )	BL	/	
		Br(PBBs&PBDEs)	BL	/	
15	Silver metal frame	Pb	BL	/	PASS
		Cd	BL	/	
		Hg	BL	/	
		Cr(Cr(VI) )	BL	/	
		Br(PBBs&PBDEs)	/	/	
16	Silver metal shell	Pb	BL	/	PASS
		Cd	BL	/	
		Hg	BL	/	
		Cr(Cr(VI) )	BL	/	
		Br(PBBs&PBDEs)	/	/	
17	Black plastic	Pb	BL	/	PASS
		Cd	BL	/	
		Hg	BL	/	
		Cr(Cr(VI) )	BL	/	
		Br(PBBs&PBDEs)	BL	/	
18	SMD inductance	Pb	BL	/	PASS
		Cd	BL	/	
		Hg	BL	/	
		Cr(Cr(VI) )	BL	/	
		Br(PBBs&PBDEs)	BL	/	
19	Silver metal sheet	Pb	BL	/	PASS
		Cd	BL	/	
		Hg	BL	/	
		Cr(Cr(VI) )	BL	/	
		Br(PBBs&PBDEs)	/	/	
20	Silver spring	Pb	BL	/	PASS
		Cd	BL	/	
		Hg	BL	/	
		Cr(Cr(VI) )	BL	/	
		Br(PBBs&PBDEs)	/	/	



# Test Report

No. BCTC-FYC170091944R

Date: Sep. 14, 2017

Page 6 of 12

**Note:**

- MDL = Method Detection Limit
- N.D. = Not Detected (<MDL)
- mg/kg = ppm = parts per million
- Negative = Absence of Cr(VI) , the detected Cr(VI) concentration in the boiling water extraction solution is less than 0.1 mg/kg with 50cm<sup>2</sup> sample surface area used.
- Positive = Presence of Cr(VI), the detected Cr(VI) concentration in the boiling water extraction solution is equal to or greater than 0.1 mg/kg with 50cm<sup>2</sup> sample surface area used.

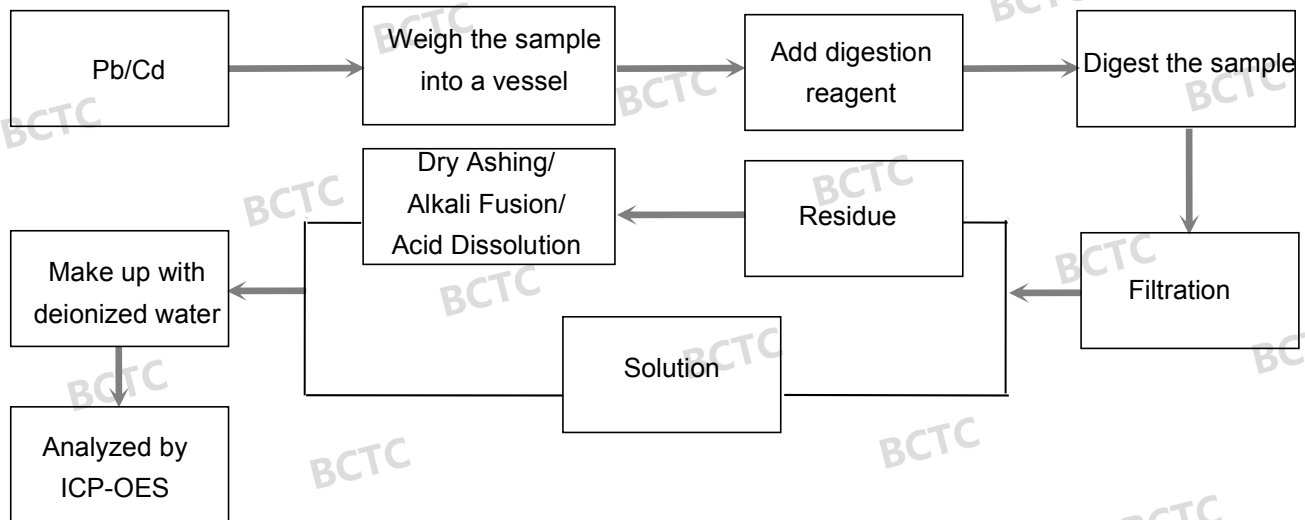
**Remark:**

- The screening results are only used for reference.
- When conducting the test for PBBs&PBDEs, XRF was introduced to screen Br Exclusively; When conducting the test for Hexavalent Chromium, XRF was introduced to screen Chromium exclusively.

**Test Process:**

The sample(s) had been dissolved totally tested for Lead, Cadmium, Mercury.

◆IEC 62321-5:2013 Ed.1.0





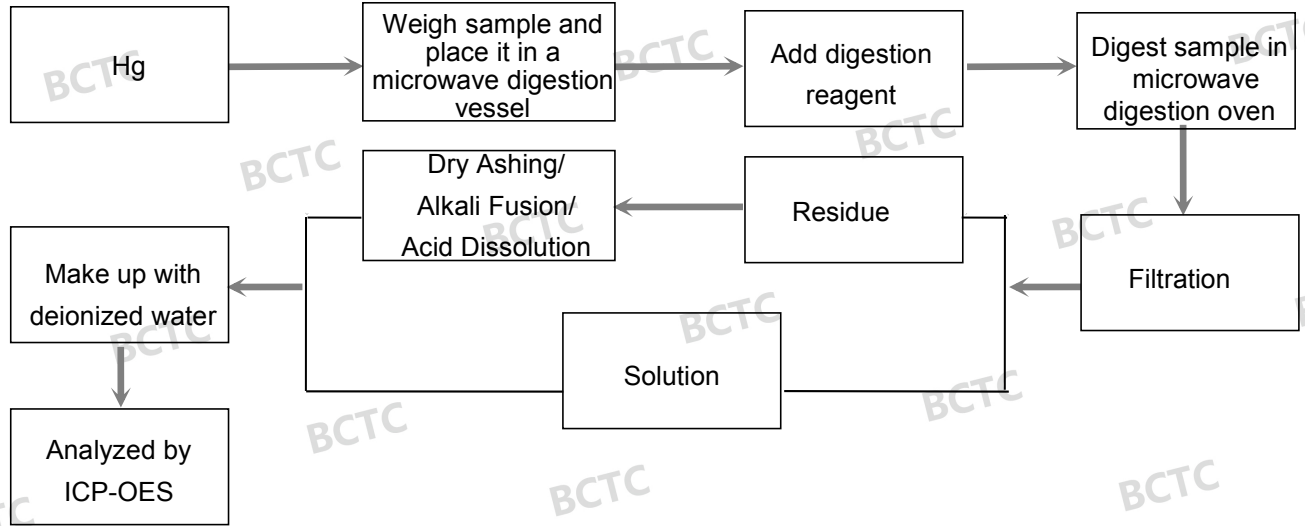
# Test Report

No. BCTC-FYC170091944R

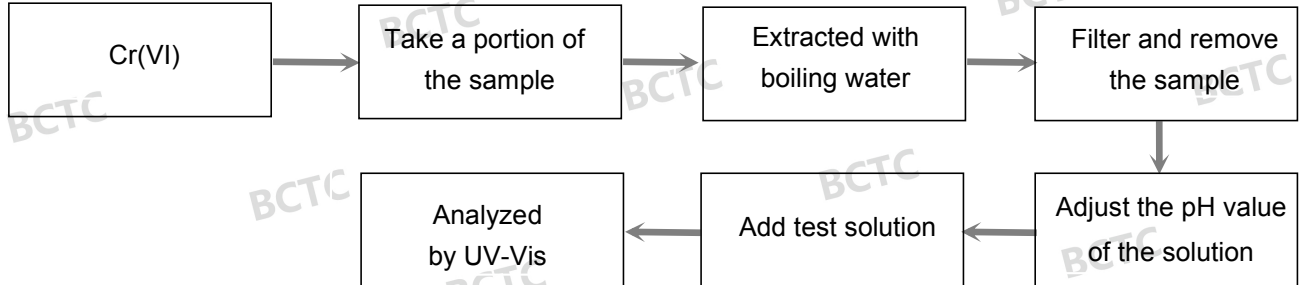
Date: Sep. 14, 2017

Page 7 of 12

◆ IEC 62321-4:2013 Ed.1.0



◆ IEC 62321-7-1:2015 Ed.1.0





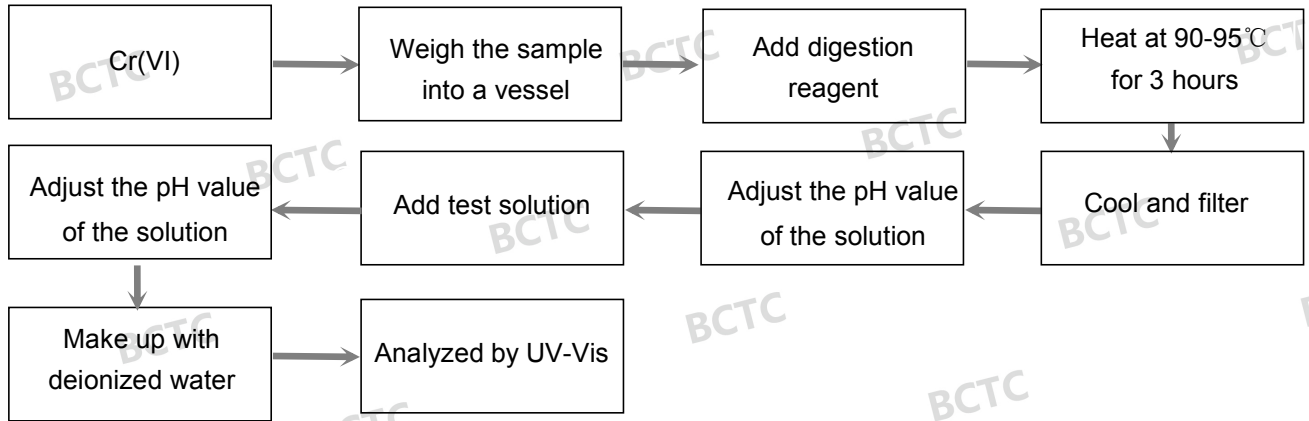
# Test Report

No. BCTC-FYC170091944R

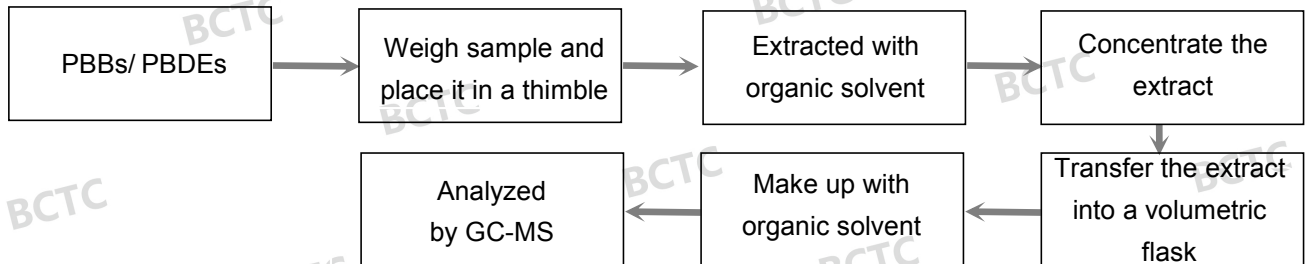
Date: Sep. 14, 2017

Page 8 of 12

◆ IEC 62321-7-2:2017 Ed.1.0



◆ IEC 62321-6:2015 Ed.1.0







# Test Report

No. BCTC-FYC170091944R

Date: Sep. 14, 2017

Page 9 of 12

## Photograph of Sample



Fig. 1

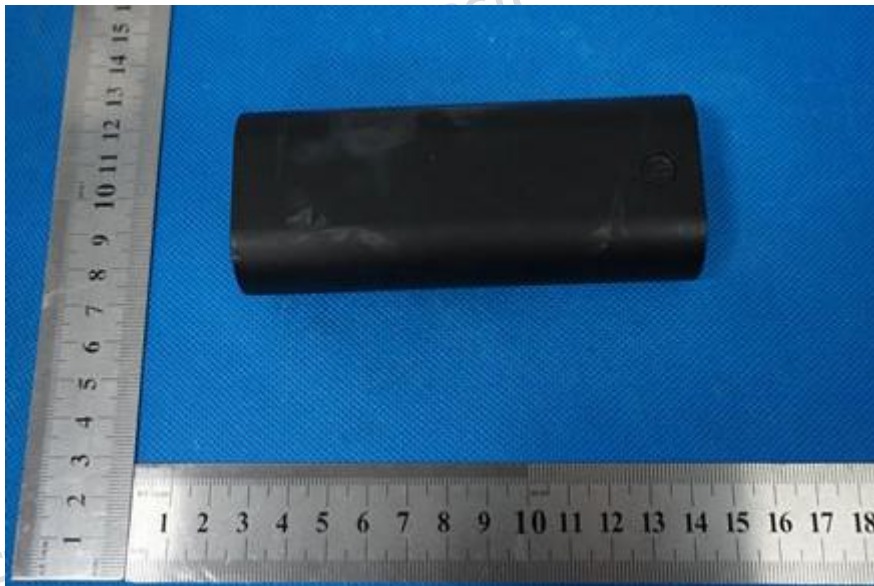


Fig. 2

Lab: Shenzhen BCTC Testing Co., Ltd.

Add: BCTC Building & 1-2F, East of B Building, pengzhou Industrial, Fuyuan 1st Road, Qiaotou Community, Fuyong Street, Bao'an District, Shenzhen, China

Tel: (86)0755-33229357 Fax: 0755-33229357



Hotline  
400-788-9558  
www.bctc-lab.com.cn



# Test Report

No. BCTC-FYC170091944R

Date: Sep. 14, 2017

Page 10 of 12

Photo(s) of the tested component(s)

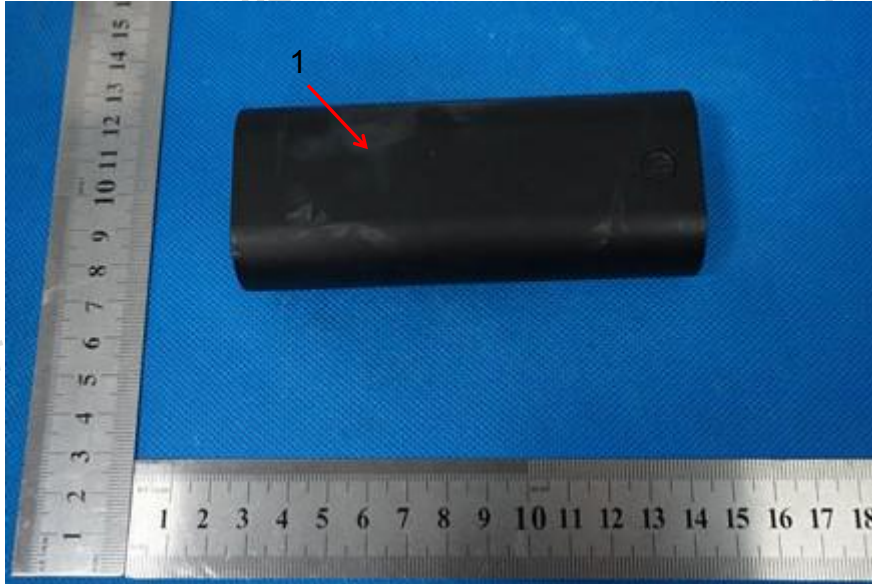


Fig. 3

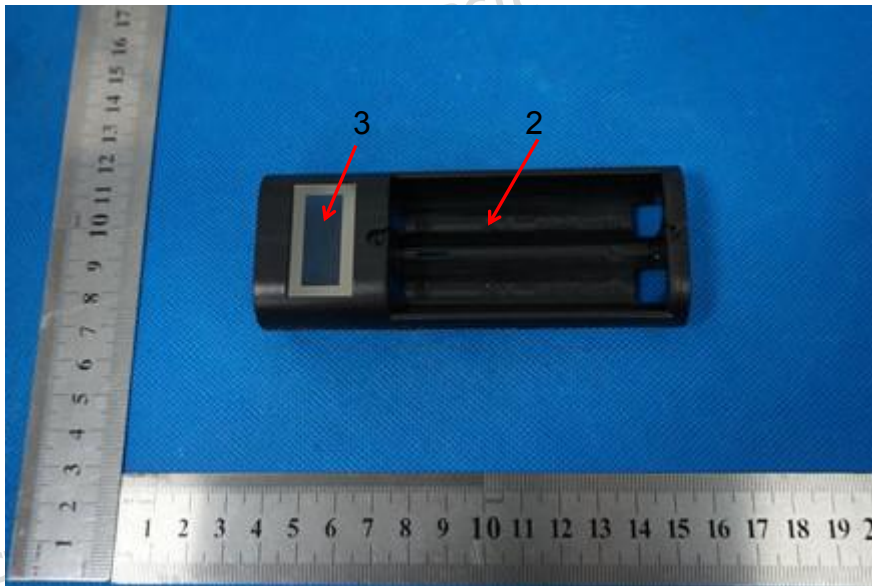


Fig. 4



# Test Report

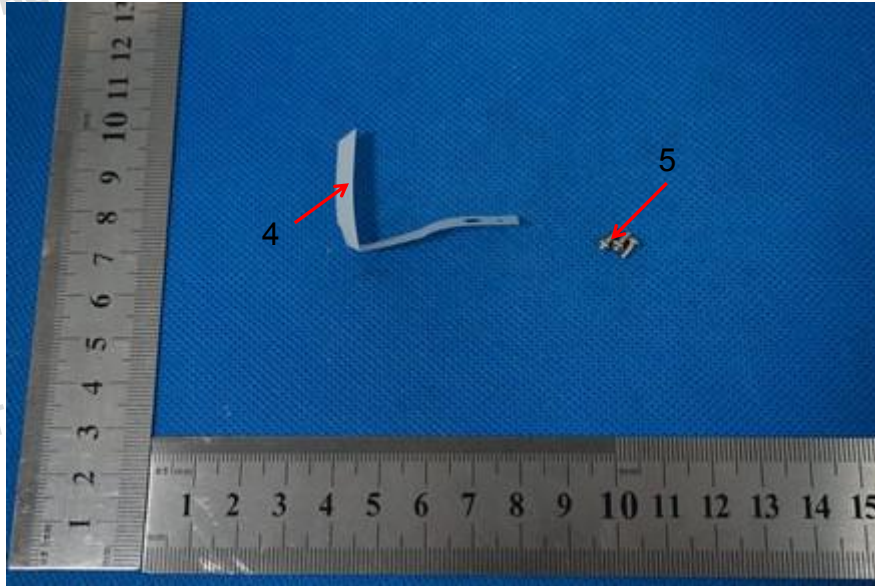


Fig. 5

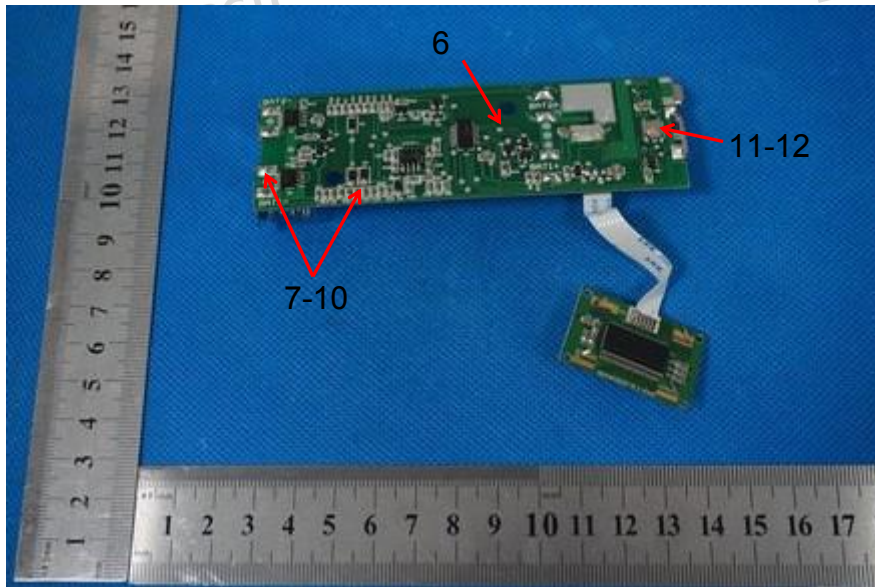


Fig. 6



# Test Report

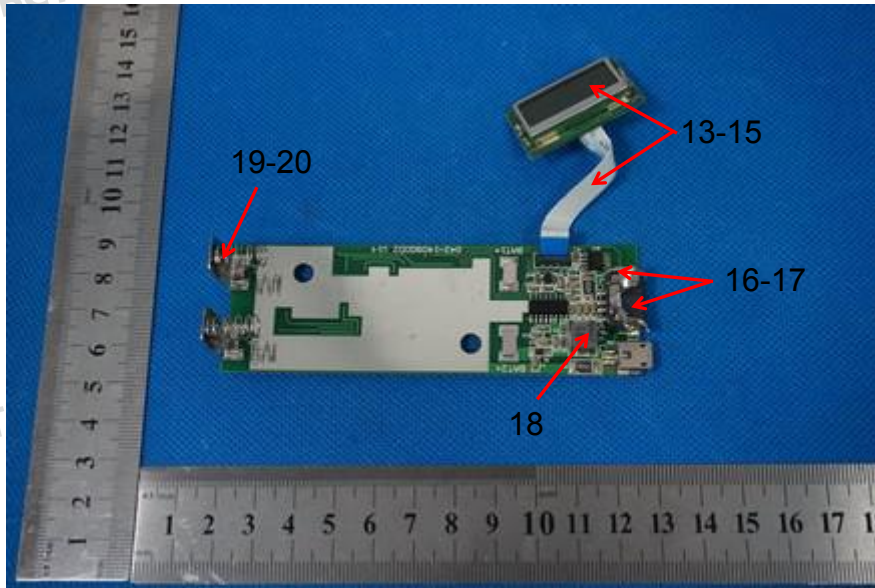


Fig. 7

\*\*\*\*\* End of Report \*\*\*\*\*